

Tuba

吹奏楽のための交響的ファンタジー「ハウルの動く城」

Howl's Moving Castle

Symphonic Fantasy for Band

久石 譲 作曲
後藤 洋 編曲

〔暁の誘惑〕

Misterioso ♩=76

The musical score for the Tuba part is written in treble clef with a key signature of two sharps (F# and C#). The tempo is marked 'Misterioso' with a quarter note equal to 76 beats per minute. The score consists of several measures, some of which are repeated multiple times, indicated by repeat signs and measure numbers in parentheses.

Measure 7: **A** **Vigoroso** ♩=132. The tempo changes to 'Vigoroso' with a quarter note equal to 132 beats per minute. The measure is marked **ff** (fortissimo) and includes a crescendo hairpin. The measure is repeated 12 times, with the first measure of the repeat marked **mf cresc.** (mezzo-forte, crescendo).

Measure 25: **B**. The measure is marked **ff** (fortissimo) and includes a crescendo hairpin. The measure is repeated 10 times.

Measure 40: **C**. The measure is marked **f** (forte) and includes a crescendo hairpin. The measure is repeated 10 times.

Measure 46: **D** ♩=♩. The measure is marked **p cresc. poco a poco** (piano, crescendo, poco a poco) and includes a crescendo hairpin. The measure is repeated 10 times.

Measure 52: **E**. The measure is marked **mp cresc. poco a poco** (mezzo-piano, crescendo, poco a poco) and includes a crescendo hairpin. The measure is repeated 10 times.

Measure 60: **F**. The measure is marked **ff** (fortissimo) and includes a crescendo hairpin. The measure is repeated 10 times.

Measure 67: **G**. The measure is marked **p** (piano) and includes a crescendo hairpin. The measure is repeated 10 times.

Measure 74: **H**. The measure is marked **mp** (mezzo-piano) and includes a crescendo hairpin. The measure is repeated 10 times.

Measure 81: **I** one play. The measure is marked **ff** (fortissimo) and includes a crescendo hairpin. The measure is repeated 10 times.

Tuba

87 *mf* *cresc.*

94 *ff*

102 **G** *mf* *accel.*

107 *ff*

111 **H** Calmando $\text{♩}=80$ **I** Con moto $\text{♩}=80$ Alla marcia $\text{♩}=112$

133 **J** **K** *f*

146 **L** *f*

151

156 **M** *f*

161

Tuba

166 N Solo *mp*

Tuba

258 one play

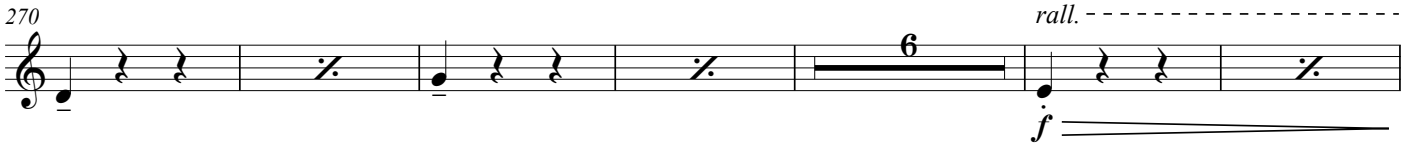


264

X tutti



270

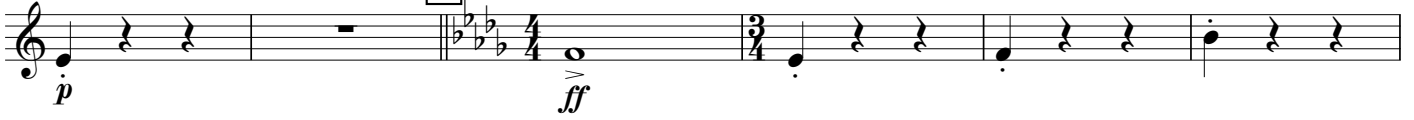


282

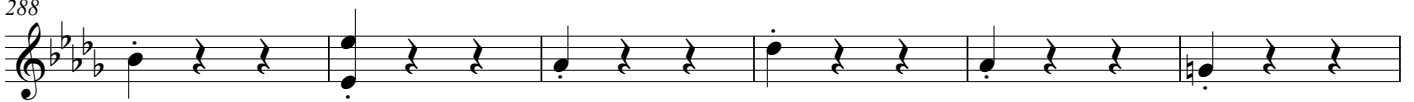
Y

allarg. molto

Tempo di valse $\text{♩} = 63$



288

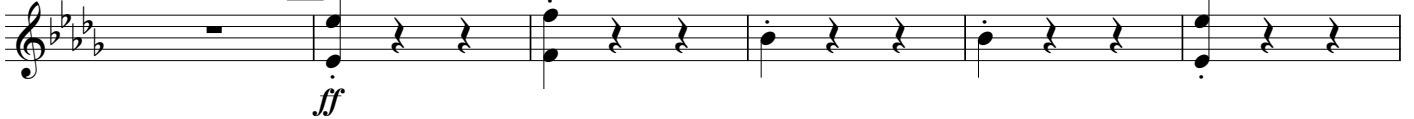


294



300

Z



306

accel. molto



312

AA

Più mosso $\text{♩} = 76$



318



324

allarg. molto

