

2nd Trombone in B^b (B. C.)

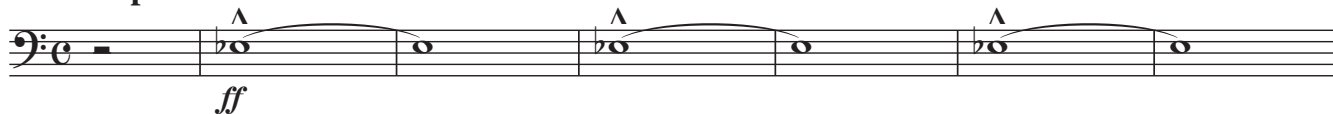
スピリティッド・アウェイ

《千と千尋の神隠し》より

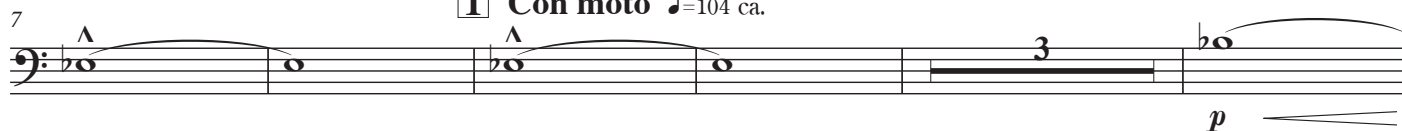
Spirited Away

J. Hisaishi & Y. Kimura
arranged by Kazuhiro Morita

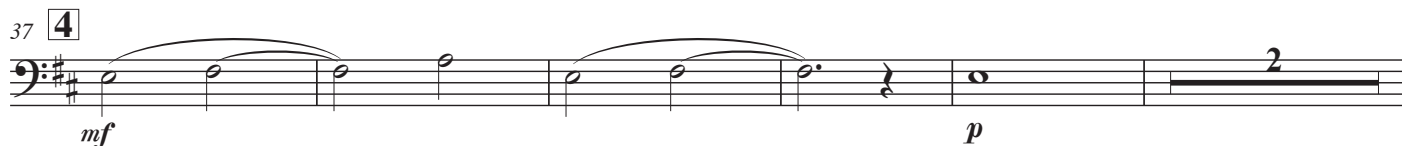
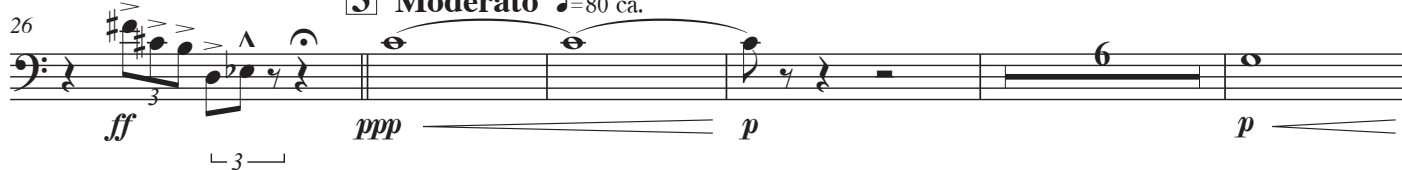
Poco pesante ♩=80 ca.



1 **Con moto** ♩=104 ca.



3 **Moderato** ♩=80 ca.



5

6 **Poco più animato** ♩=112 ca.



7



75

sfz *p* *ff*

8 Furioso ♩=126 ca.

79

ff *f* *marc.* *f*

84

ff *ff* *ff* *ff* *ff*

89

f *f* *f* *f* *f* *f*

10 Marcato ♩=104 ca.

95

ff *ff* *ff* *ff* *ff* *ff*

11 Poco meno mosso, tranquillo ♩=96 ca.

100

f *f* *f* *f* *f*

12

109

f *f* *f* *f* *f*

13

121

f *f* *f* *f* *f* *ff*

14 Piacere ♩=44 ca. **15**

127

sfz *ff* *ff* *ff* *ff* *ff*

「いつも何度でも」 © 2001 by Studio Ghibli

16 Moderato ♩=88 ca. **17 Poco più allegro**

167

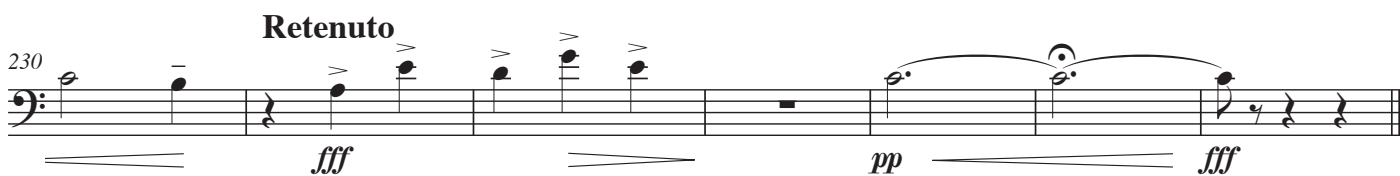
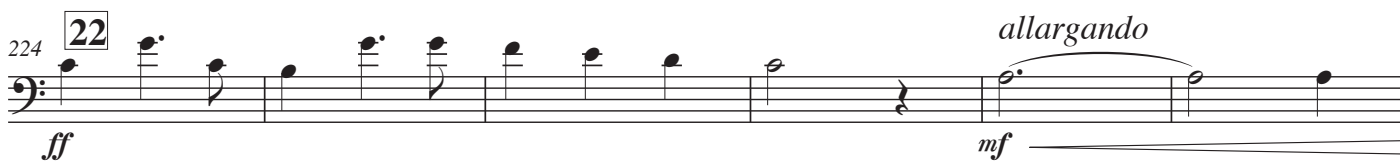
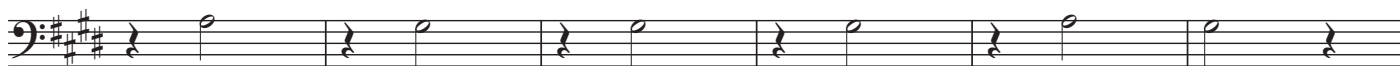
p *p* *p* *p* *p* *ff*

18

188

mp *mp* *mp* *mp* *mp* *mp*

194



スピリティッド・アウェイ

《千と千尋の神隠し》より
Spirited Away

alternative opening

Allegretto ♩=112 ca.

