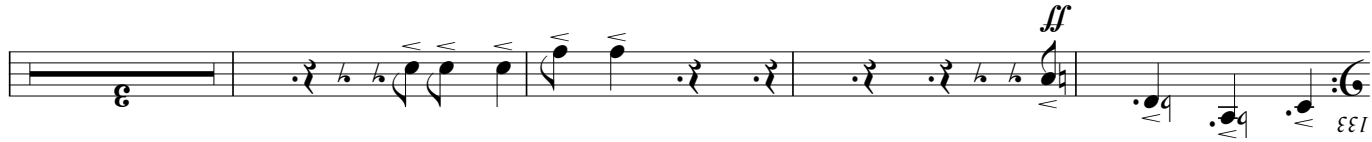
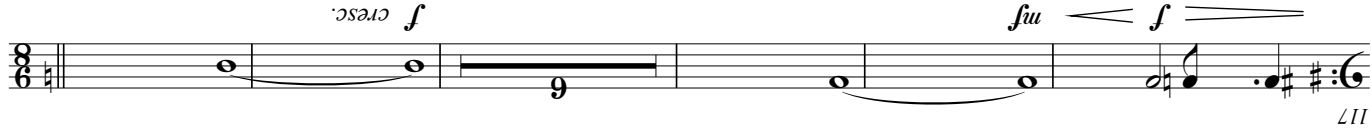
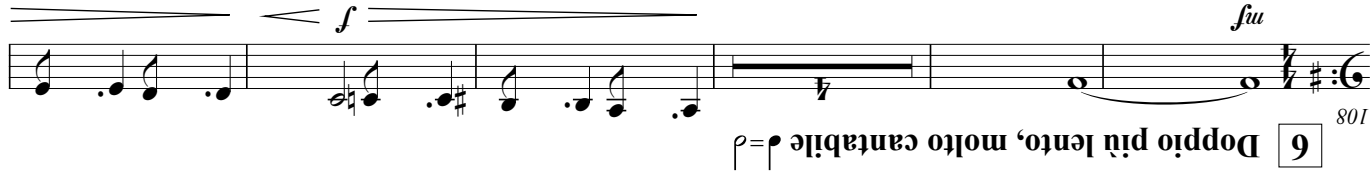
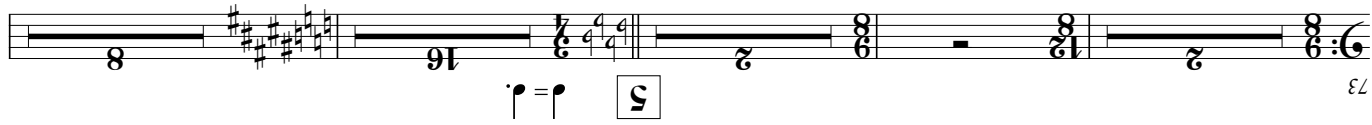
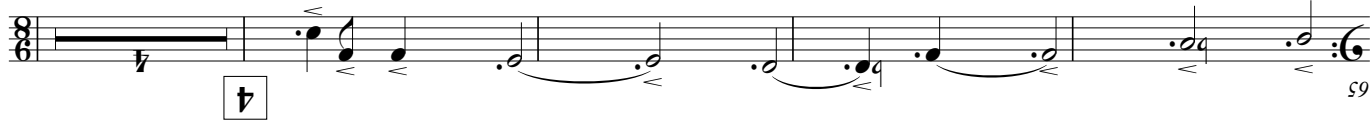
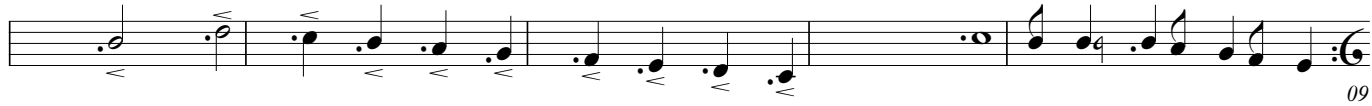


Bass Trombone in B \flat



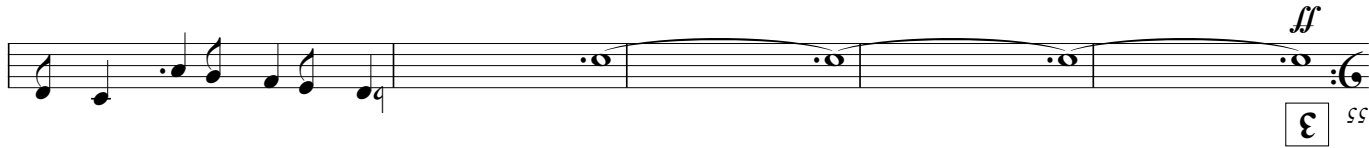
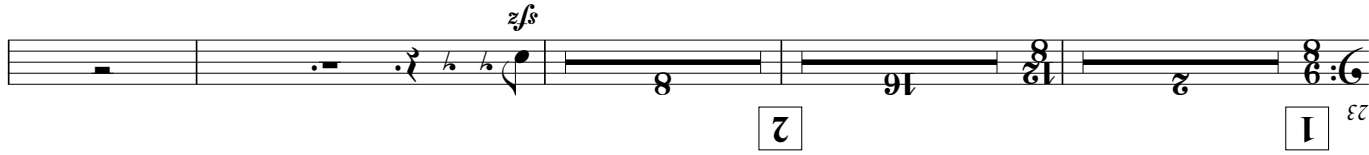
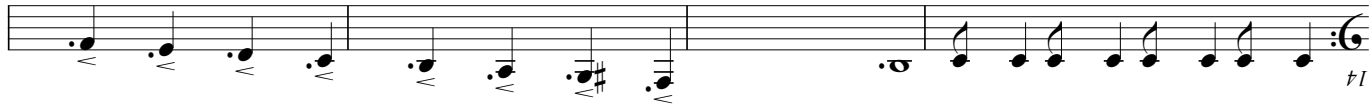
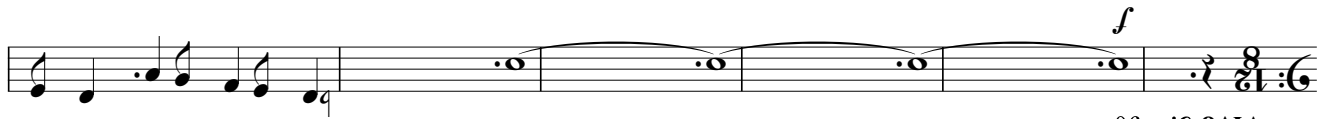
Bass Trombone in B \flat

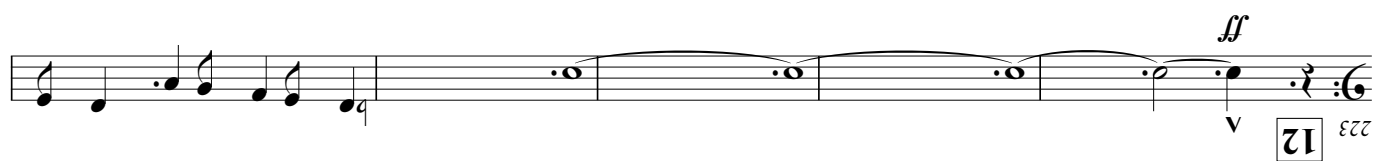
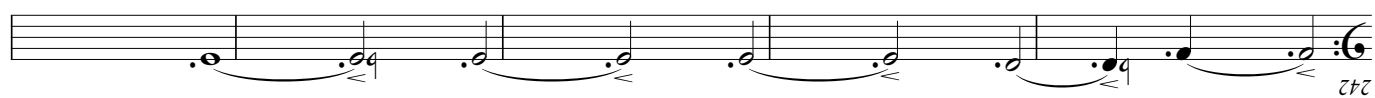
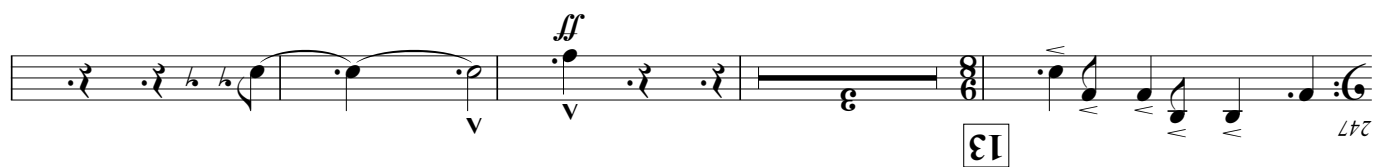
Cherry Blossom Brilliance

for Wind Ensemble

Chang Su KOH (2015)

Vivo $\text{♩} = 90$





Bass Trombone in B \flat

140 *mf* *cresc.*

146 *f* *cresc.*

151 *ff*

8

157 *ff*

163

169

175 *poco allarg.*

181 *Largamente* $\text{♩} = \text{♩}$

9

187 *poco allarg.* *a tempo* *poco allarg.*

194 *ff*

10 *Tempo I*

200 *ff* *f*