

68 **H**

73 **I**

79 **J** Moderato  $\text{♩} = 100$

86 **K** Vivace  $\text{♩} = 160$

93

## II. Andante

Andante  $\text{♩} = 80$

**A**

**B** 21

29

Tuba in E $\flat$   
(Treble Clef)

# School Band Symphony

## I. Allegro

Hideaki Miura(2017)

Allegro ♩ = 132

**A**

**B**

**C**

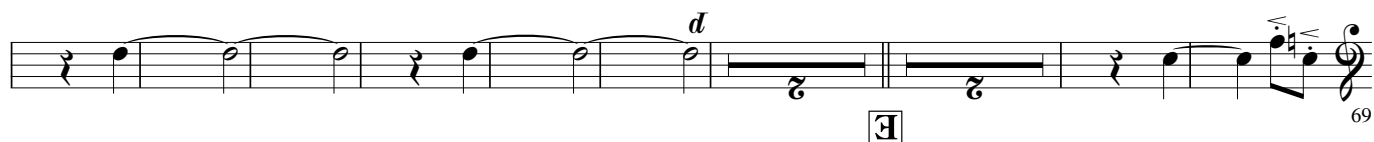
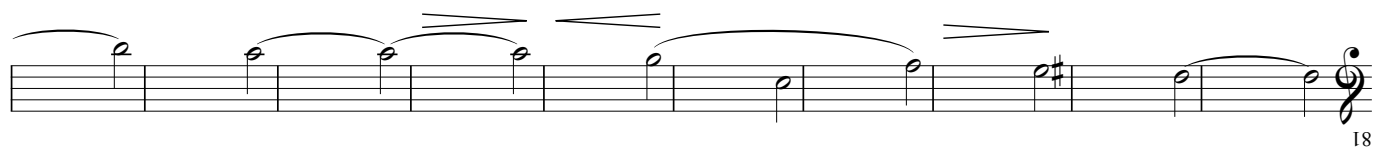
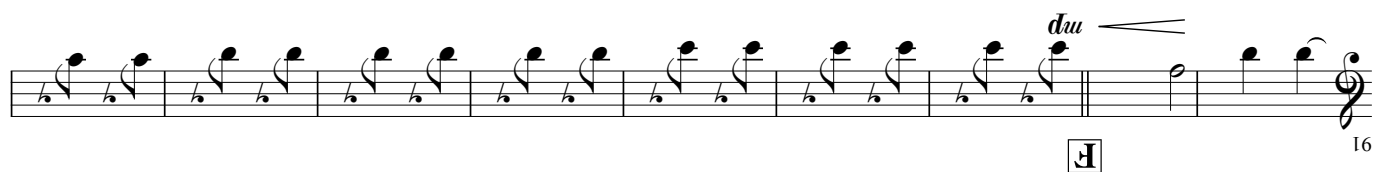
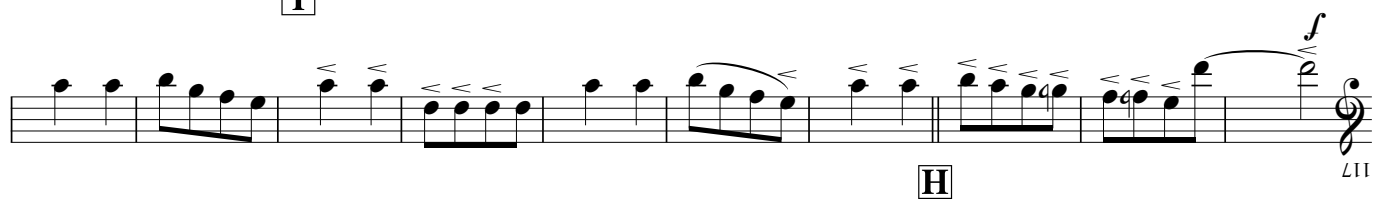
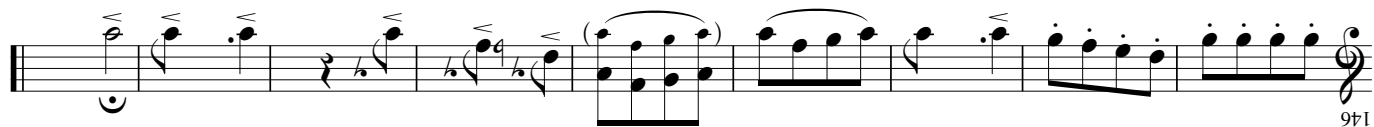
**D**

**E**

**F**

**G**

**H**



### III. Menuetto

Tuba in E $\flat$

Menuetto, Andantino  $\text{♩} = 126$

Measures 7-13 of the Menuetto, Andantino. The score is written for Tuba in E $\flat$ . It begins with a treble clef and a 3/4 time signature. Measure 7 contains a half note G $\flat$  and a quarter note A $\flat$ . Measure 8 contains a half note B $\flat$  and a quarter note C $\flat$ . Measure 9 contains a half note D $\flat$  and a quarter note E $\flat$ . Measure 10 contains a half note F $\flat$  and a quarter note G $\flat$ . Measure 11 contains a half note A $\flat$  and a quarter note B $\flat$ . Measure 12 contains a half note C $\flat$  and a quarter note D $\flat$ . Measure 13 contains a half note E $\flat$  and a quarter note F $\flat$ . The score includes dynamic markings *f* and *mf*, and articulation marks.

Measures 14-29 of the Menuetto, Andantino. The score continues with a treble clef and a 3/4 time signature. Measure 14 contains a half note G $\flat$  and a quarter note A $\flat$ . Measure 15 contains a half note B $\flat$  and a quarter note C $\flat$ . Measure 16 contains a half note D $\flat$  and a quarter note E $\flat$ . Measure 17 contains a half note F $\flat$  and a quarter note G $\flat$ . Measure 18 contains a half note A $\flat$  and a quarter note B $\flat$ . Measure 19 contains a half note C $\flat$  and a quarter note D $\flat$ . Measure 20 contains a half note E $\flat$  and a quarter note F $\flat$ . Measure 21 contains a half note G $\flat$  and a quarter note A $\flat$ . Measure 22 contains a half note B $\flat$  and a quarter note C $\flat$ . Measure 23 contains a half note D $\flat$  and a quarter note E $\flat$ . Measure 24 contains a half note F $\flat$  and a quarter note G $\flat$ . Measure 25 contains a half note A $\flat$  and a quarter note B $\flat$ . Measure 26 contains a half note C $\flat$  and a quarter note D $\flat$ . Measure 27 contains a half note E $\flat$  and a quarter note F $\flat$ . Measure 28 contains a half note G $\flat$  and a quarter note A $\flat$ . Measure 29 contains a half note B $\flat$  and a quarter note C $\flat$ . The score includes dynamic markings *f* and *mf*, and articulation marks.

Measures 30-41 of the Menuetto, Andantino. The score continues with a treble clef and a 3/4 time signature. Measure 30 contains a half note D $\flat$  and a quarter note E $\flat$ . Measure 31 contains a half note F $\flat$  and a quarter note G $\flat$ . Measure 32 contains a half note A $\flat$  and a quarter note B $\flat$ . Measure 33 contains a half note C $\flat$  and a quarter note D $\flat$ . Measure 34 contains a half note E $\flat$  and a quarter note F $\flat$ . Measure 35 contains a half note G $\flat$  and a quarter note A $\flat$ . Measure 36 contains a half note B $\flat$  and a quarter note C $\flat$ . Measure 37 contains a half note D $\flat$  and a quarter note E $\flat$ . Measure 38 contains a half note F $\flat$  and a quarter note G $\flat$ . Measure 39 contains a half note A $\flat$  and a quarter note B $\flat$ . Measure 40 contains a half note C $\flat$  and a quarter note D $\flat$ . Measure 41 contains a half note E $\flat$  and a quarter note F $\flat$ . The score includes dynamic markings *f* and *mf*, and articulation marks.

### IV. Presto

Presto  $\text{♩} = 152$

Measures 1-24 of the IV. Presto. The score is written for Tuba in E $\flat$ . It begins with a treble clef and a 2/4 time signature. Measure 1 contains a half note G $\flat$ . Measure 2 contains a half note A $\flat$ . Measure 3 contains a half note B $\flat$ . Measure 4 contains a half note C $\flat$ . Measure 5 contains a half note D $\flat$ . Measure 6 contains a half note E $\flat$ . Measure 7 contains a half note F $\flat$ . Measure 8 contains a half note G $\flat$ . Measure 9 contains a half note A $\flat$ . Measure 10 contains a half note B $\flat$ . Measure 11 contains a half note C $\flat$ . Measure 12 contains a half note D $\flat$ . Measure 13 contains a half note E $\flat$ . Measure 14 contains a half note F $\flat$ . Measure 15 contains a half note G $\flat$ . Measure 16 contains a half note A $\flat$ . Measure 17 contains a half note B $\flat$ . Measure 18 contains a half note C $\flat$ . Measure 19 contains a half note D $\flat$ . Measure 20 contains a half note E $\flat$ . Measure 21 contains a half note F $\flat$ . Measure 22 contains a half note G $\flat$ . Measure 23 contains a half note A $\flat$ . Measure 24 contains a half note B $\flat$ . The score includes dynamic markings *f* and *d*, and articulation marks.