

B♭ 1st Trombone  
(Bass Clef)

# Die schöne Galathee

## Ouverture

Fr. v. Suppé  
trans. by A. Isozaki

**Allegro spiritoso con brio** (♩.=108)

ff

1

ff

ff

*p cresc.*

2

*f*

*cresc.*

*ff*

12

**Andante** (♩.= 60)

4

6

18

3

**Allegretto animato** (♩.= 69)

ff

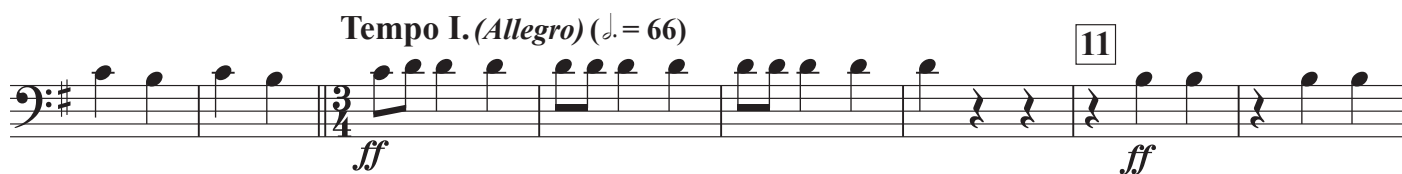
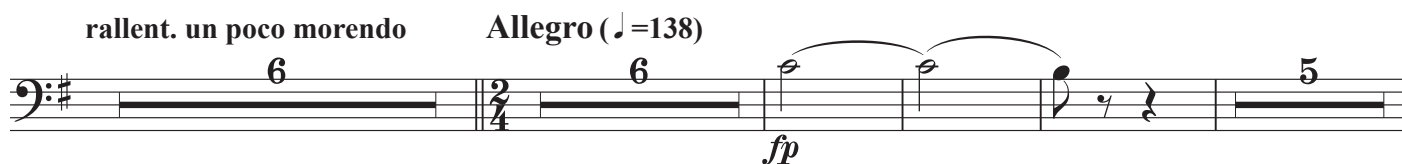
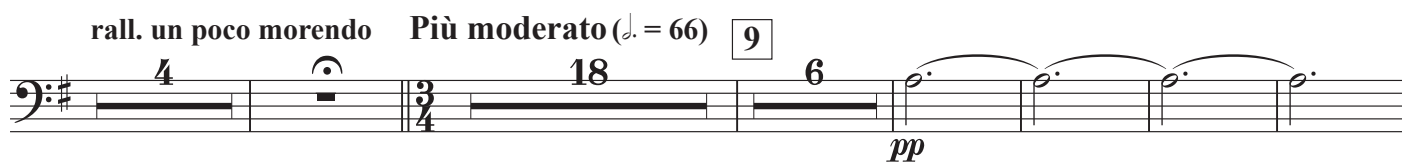
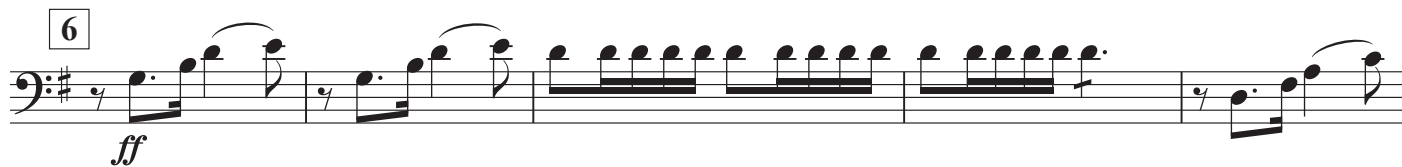
12

*p*

4

5

10



Musical score for the first system of "The Swan" by Camille Saint-Saëns. The score is written for a bass line in G major (one sharp). It consists of 13 measures. The notation includes eighth and sixteenth notes, rests, and dynamic markings such as *cresc.* and *ff*. A tempo change is indicated by "Poco più mosso (♩.=104)". The system concludes with a double bar line.