

1st&2nd Tubas in Bb (B.C.)

Commissioned by Shizuoka University Wind Orchestra

Zenith of the Maya

Satoshi Yagisawa

1st&2nd Tubas in Bb (B.C.)

Commissioned by Shizuoka University Wind Orchestra

Zenith of the Maya

Satoshi Yagisawa

I. Royal ceremony and sacrifice of renewal

Brillante ♩ = ca.66

f **sfz**

A **f**

mp poco a poco cresc. **f** **mf** (*allargando*)

B Cantabile (a tempo) **a2** **f** **mf**

molto ritardando **C Espressivo a tempo** **f**

a2 **mf** **mp**

D Misterioso **10** **mf**

E Animato ♩ = ca.66 **a2** **mf**

mf **mf**

F **f** **mf**

1st&2nd Tubas

61 G

66

71 *ff* *mp* *mf*

76 *f* *ff* *fffz* *f* (poco ritardando) H Feroce ♩ = ca.152

81 *f* *f*

87 *f* *mf* I

93 *f*

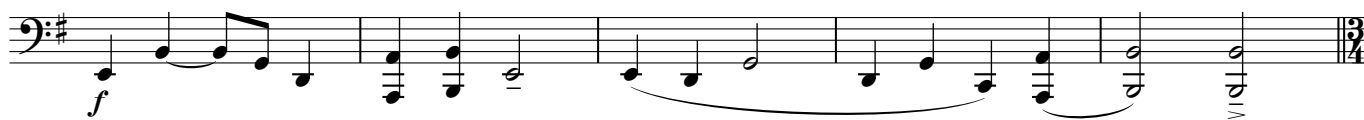
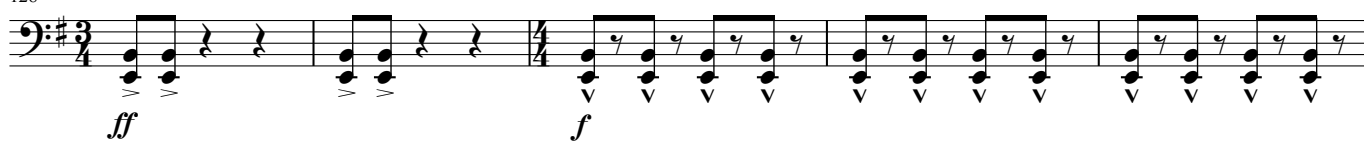
98 *f* *f* a2

103 *f* J

109 *mf* a2

115 *f* 4

123

128 **K**

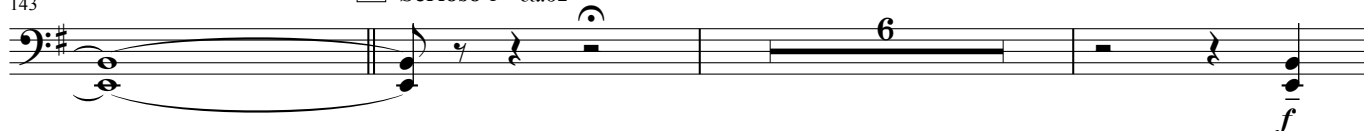
133



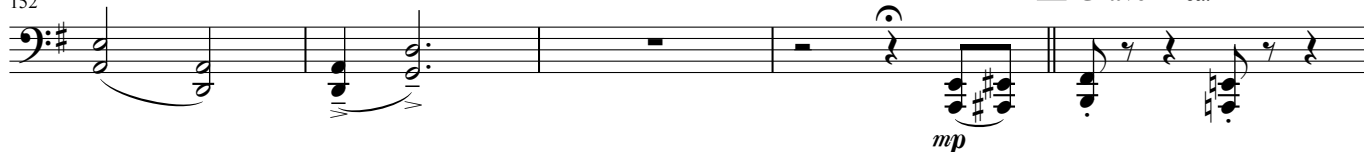
138



143

L *Serioso* ♩ = ca.52

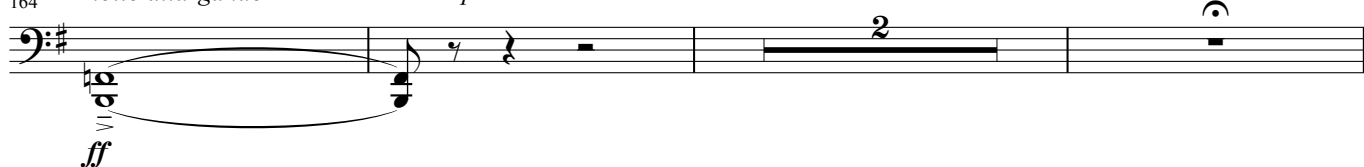
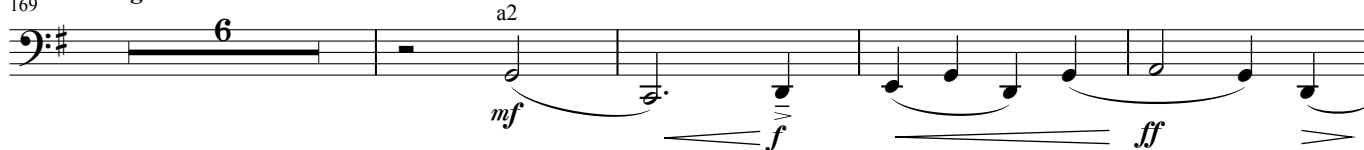
152

M *Grave* ♩ = ca.63

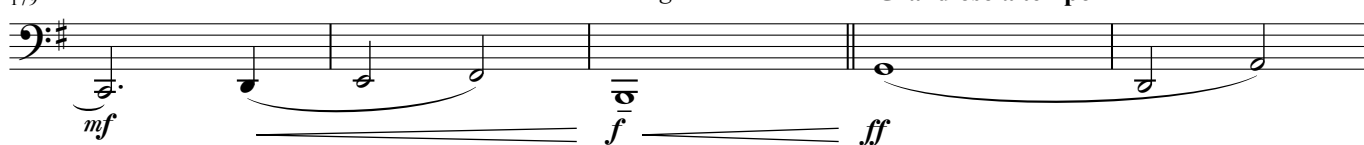
157

poco a poco accelerando

161

poco a poco cresc.164 *molto allargando**a tempo*169 **N** *Elegiaco* ♩ = ca.63

179

*allargando***O** *Grandioso a tempo*

184 *mf* *f* *poco a poco cresc.*

189 *molto allargando* **P** **Brillante a tempo** *ff* *molto allargando*

193 *sfz* *sfz^p* *sfz*

II. Glorious ruins still arise

Elegiaco ♩ = ca. 48

A *mp*

14 *mf*

18 **B** **Arioso** ♩ = ca. 54 **C** **Cantabile** ♩ = ca. 60 *mp*

26 *allargando* **D** **Brillante** ♩ = ca. 66 *mf* *f* *3*

31 **E** **Espressivo** ♩ = ca. 60 *mf* *mp*

42 *mf* *f*

47 **F** **Energico** ♩ = ca. 69 *f*

54 *sfz* *sfz* *sfz^p* *sfz* *sfz* *4*

1st&2nd Tubas

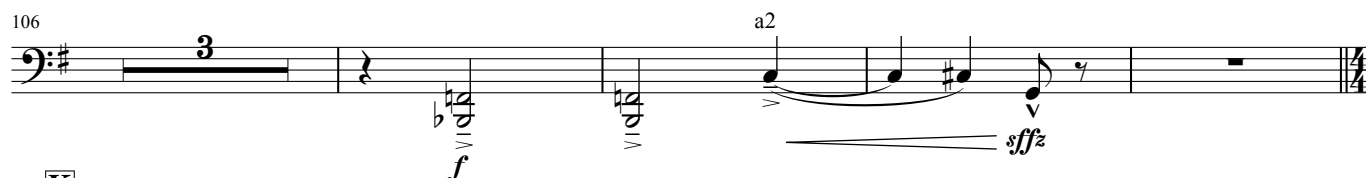
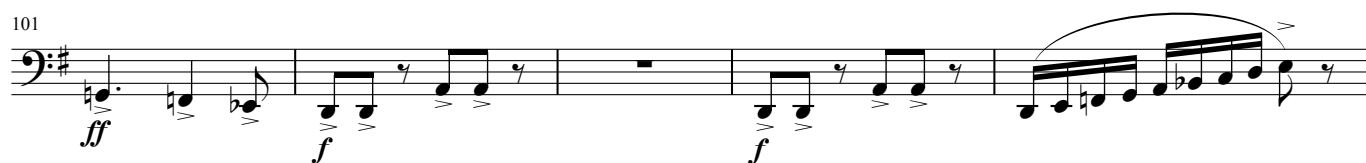
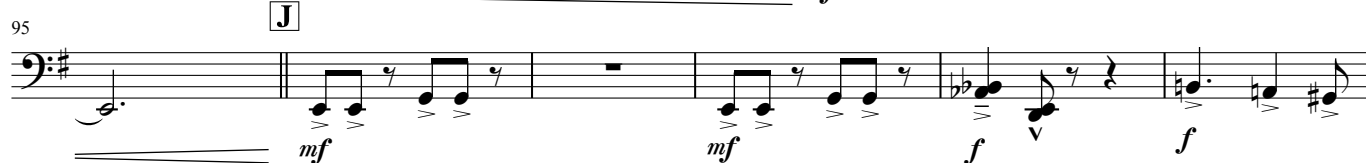
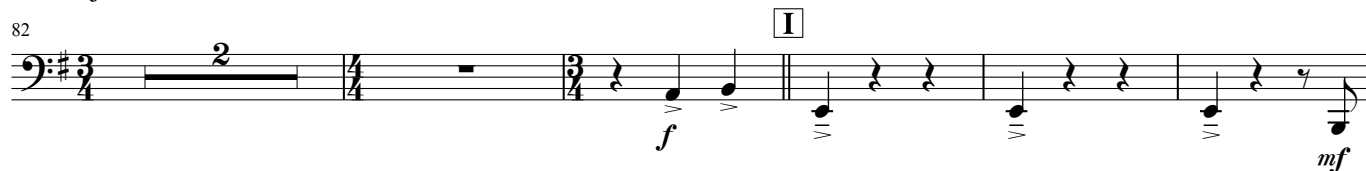
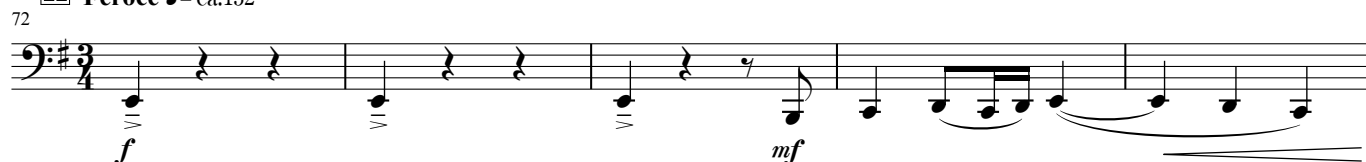
62 **G** Maestoso ♩ = ca.63



67 *allargando*



H Feroce ♩ = ca.152



130 **L**

f

148

154

ff

161 *allargando* **M** *Con sentimento* ♩ = ca.56

sfz *mp*

167

173 **N** *Cantabile* ♩ = ca.60

mf

185 **O**

mf

191

f *mf*

197 *molto allargando* **P** *Brillante a tempo*

f *ff*

203

ff

210 *molto allargando*

sfz *sfz*