

Le chant de l'amour et de la prière (Song of Love and Prayer)

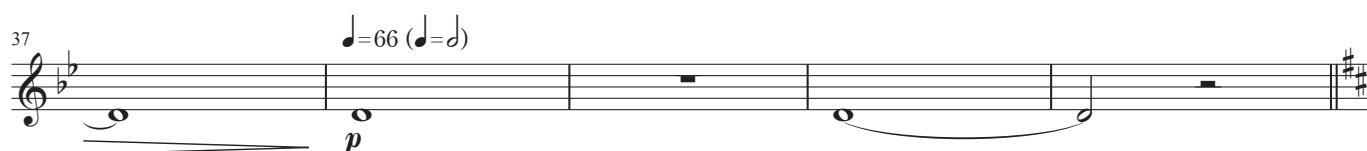
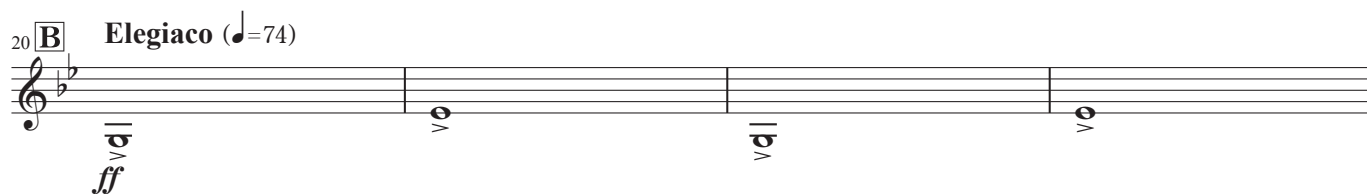
ル・シャン・ドウ・ラムール・エ・ドウ・ラ・プリエール

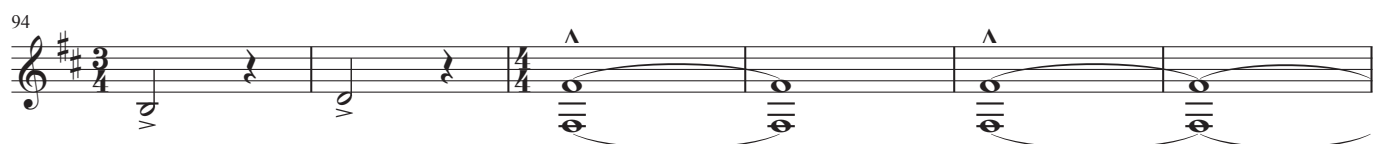
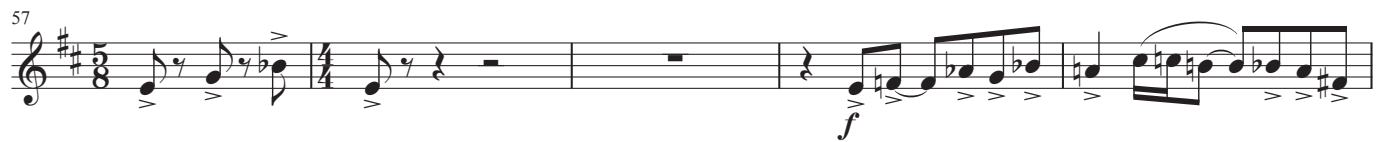
松下 倫士
Tomohito Matsushita

Andante (♩=66)



Amoroso e con espressivo (♩=88)



Tuba in B \flat 42 **D** Furioso (♩=138~144)

Tuba in B \flat

100 *rubato* **I Cantabile** (♩=58)

112 *mp*

117 **J** *mp*

123 *poco a poco string.*
poco a poco cresc.

129 *rit.* **K** *a tempo* *ff*

134 *f*

140 **L Allegro con moto** (♩=142) *sfz*

145 **Con fuoco** (♩=84 / ♩=168) *ff*

151

155 **M Poco più mosso** (♩=100) *f*

158

Tuba in B \flat

Ancora poco più mosso (♩=108)

161

165

168

171

175

180

185

190

195

200

206

N ♩.=♩

Q Largamente (♩=72)

allarg. **Con anima** (♩=160~168)

mf *cresc.* *ff* *ff*