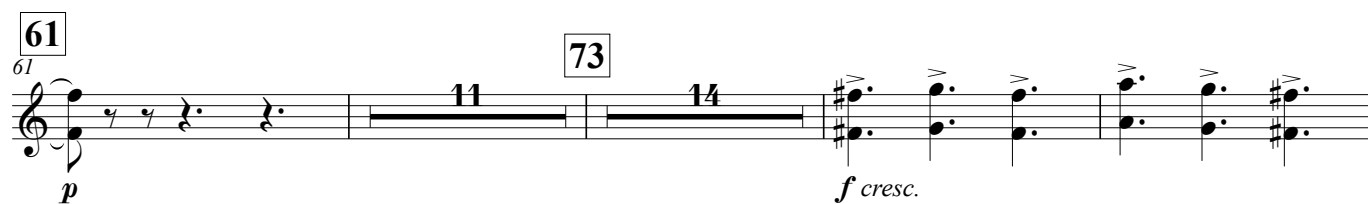
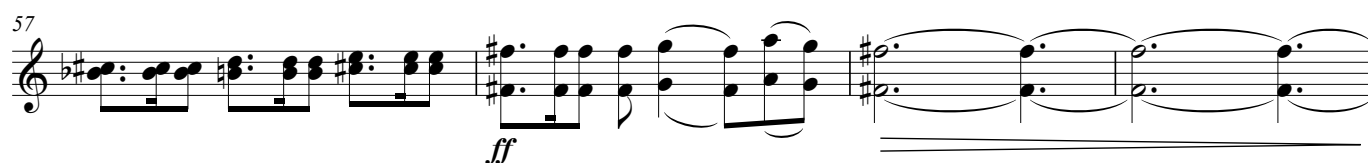
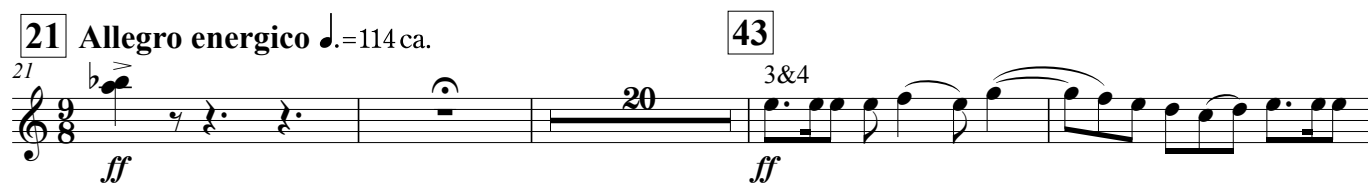
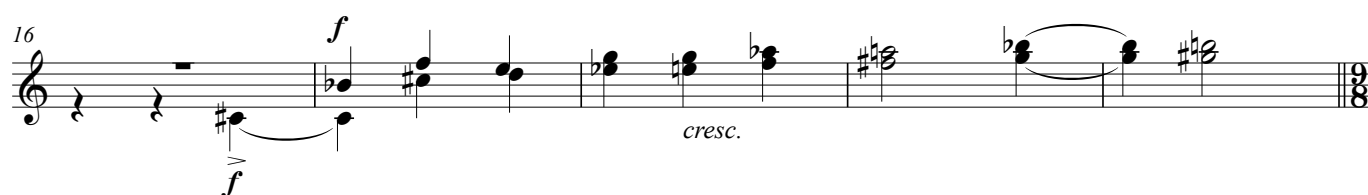
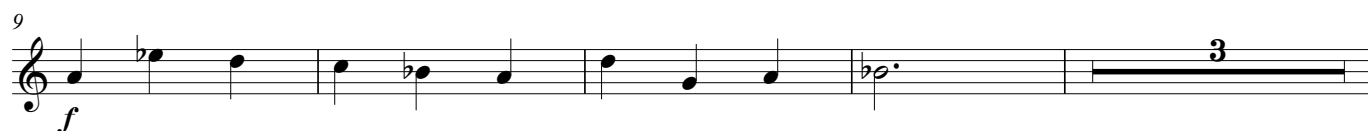


3rd & 4th Horns in E^b

Commissioned by Tokyo Ryusei Symphonic Band

Triplo Triplum*for Wind Orchestra*

Chang Su KOH (2018)

Andante largamente ♩ = 72 ca.

3rd & 4th Horns in E^b

98

93 *ff* 3&4

100

Andante largamente

104 106 ♩ = 72 ca. 114 124

132 *agitato* - - - - - *molto allarg.* - - - - - 3&4

132 *mf* *f* *cresc.*

141 *a tempo* *ff*

149 *cresc.* *molto allarg.* - - - - - 153 *Allegro energico* ♩ = 114 ca. *fff*

155 173 182 *Pesante* ♩ = 64 ca. *mf* *cresc.*

184 *poco a poco agitato* - - - - - *f* 3

3rd & 4th Horns in E^b

190 Allegro energico ♩ = 114 ca.

