

1st Trombone in B^b
(Bass Clef)

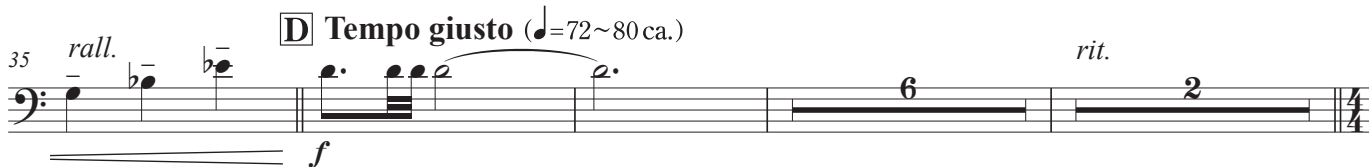
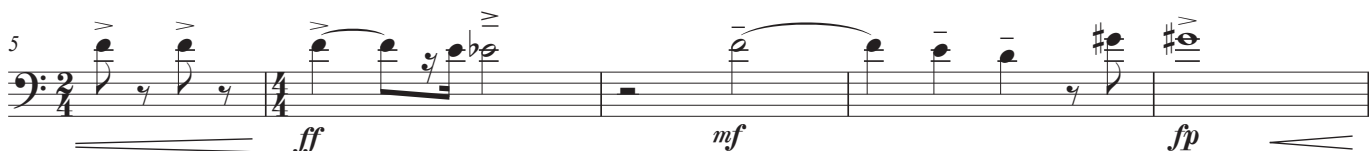
Commissioned by Nakayama Satsukidai Junior High School Band, Takarazuka City

Gratias Cantare

田村修平 作曲

Shuhei TAMURA (2020)

Allegro ma non troppo (♩=120 ca.)



1st Trombone in B^b (Bass Clef)

(...♩=100 ca.) *rall.* **G** **Allegro** (♩=126 ca.)

62 *f* *ff* *mf* 3

67 *fp* *ff* *mp* *mf* *f*

72 *mp* *cresc.* 3

H **Agitato** (♩=132 ca.)

77 *ff* 3 *ff* 3

83 **I** *ff* 3

molto riten. **J** *a tempo*

89 *ff* 3 3

94 **K** *mp* *f* **L**

102 *ff* 3 3 3 3 *mp* *cresc.* *string.* **M**

107 *ff* *ff* *mf* *cresc.* *molto rall.* *ff*

1st Trombone in B^b (Bass Clef)

112 **G.P.** **N Cantabile** (♩=58~63 ca.) *allarg.*
mf marcato

123 **O Poco con brio** (♩=66~72 ca.) *poco rit.*
f *mf*

129 *a tempo* **P**
ff *mp*

135 *cresc.*

140 *rall.* **Q molto stringendo** (♩=40 ca.~) *poco rall.*
f *mp* *cresc.* *f*

146 **R Cantabile con brio** (♩=69~72 ca.)
ff

151 *poco rit.* **S Brillante** (♩=72~80 ca.)
f *ff* *f marcato*

156 *poco riten.*
mf *ff*

161 *allarg.* **T Maestoso** (♩=66 ca.)
f *ff* *f*

166 *rall.* *meno mosso*
ff *p* *fff*